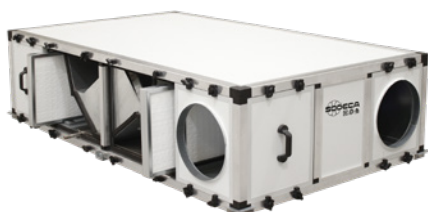


RECUP/EC-BS

Heat recovery units with counter flow plate exchanger, automatic control and EC Technology motors, for installation in false ceilings



Common features:

- EC type Plug Fan adjustable 0-10 V.
- Built-in maintenance disconnect switch.
- Thermal efficiency of the equipment 85-90%.
- Structure with high quality reinforced aluminum profiles.
- Panels with a 25 mm thick thermal and acoustic insulation; exterior made of prefinished sheet.
- EPS type panels with thermal bridge break.
- High efficiency filtration:
 - M6 + F8.
 - F7 + F9.
- Broad access for maintenance.
- Free cooling with motorized damper to perform BY-PASS.
- Condensation collection tray and drain.

- STOP/START and speed control available through control panel or external contacts.
- Built-in temperature and humidity sensors.
- Filters condition check by means of built-in pressure switches.
- Fault alarm management and shutdown due to fire alarm.
- Compatible with MODBUS RTU.

Finish:

- Aluminium frame and external prefinished sheet structure.
- 25 mm thermal and acoustic insulation panels.
- Low profile models for false ceiling installation.
- Interchangeable nozzles for better adaptation.

Built-in control box:

- Control for free cooling through motorized BY-PASS.
- Fan speed control by manual selection or by optional external sensors (CO2 or pressure).
- Integrated control system with remote control panel.

On request:

- External battery modules for air treatment.
- Filters with special efficiencies.
- Modules with UVc germicidal chamber.

Order code

RECUP/EC-BS — 800 — BS — M6+F8

RECUP/EC-BS: Heat recovery units with counter flow plate exchanger, automatic control and EC Technology motors, for installation in false ceilings

Size

Horizontal ducts and installation in false ceilings

Filters M6+F8
Filters F7+F9

Characteristics based on size

| | RECUP/ EC-800-BS | RECUP/ EC-1200-BS | RECUP/ EC-1600-BS | RECUP/ EC-2100-BS | RECUP/ EC-2700-BS |
|---|---------------------|----------------------|----------------------|----------------------|----------------------|
| Supply filter (ODA) | M6+F8 / F7+F9 | M6+F8 / F7+F9 | M6+F8 / F7+F9 | M6+F8 / F7+F9 | M6+F8 / F7+F9 |
| Extraction filter (ETA) | M6 | M6 | M6 | M6 | M6 |
| Free cooling function by means of a motorised by-pass | YES | YES | YES | YES | YES |
| Panel thickness | 25 mm | 25 mm | 25 mm | 25 mm | 25 mm |
| Condensate exhaust | YES | YES | YES | YES | YES |
| Built-in pressure switches for filter condition control | YES | YES | YES | YES | YES |
| Safety and maintenance switch | YES | YES | YES | YES | YES |
| Built-in control panel | YES | YES | YES | YES | YES |

Technical characteristics

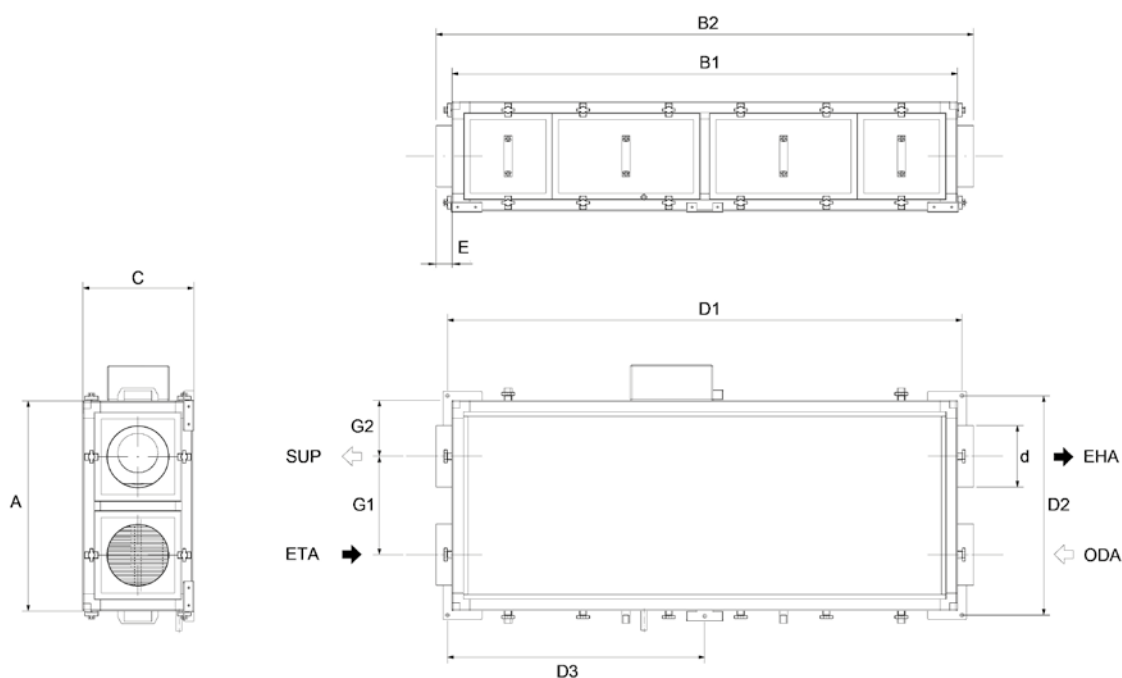
| Model | Nominal flow rate (m ³ /h) | Recovery unit efficiency (%) | Available pressure (Pa) | Nominal power (kW) | Nominal current (A) | Voltage 50/60 Hz (V) | Irradiated sound level at 5 m dB (A) | Approx. weight (Kg) | According ErP |
|------------------|--|---------------------------------|----------------------------|-----------------------|------------------------|-------------------------|---|------------------------|---------------|
| RECUP/EC-800-BS | 800 | 86.5 | 70 | 0.39 | 2.91 | 1/230 | 45 | 78 | 2018 |
| RECUP/EC-1200-BS | 1200 | 86.8 | 70 | 0.32 | 1.16 | 1/230 | 34 | 105 | 2018 |
| RECUP/EC-1600-BS | 1600 | 86.2 | 100 | 0.53 | 2.11 | 1/230 | 40 | 178 | 2018 |
| RECUP/EC-2100-BS | 2100 | 88.0 | 100 | 0.76 | 3.14 | 1/230 | 43 | 216 | 2018 |
| RECUP/EC-2700-BS | 2700 | 86.9 | 100 | 1.23 | 5.17 | 1/230 | 50 | 216 | 2018 |



Erp. (Energy Related Products)

Information on Directive 2009/125/EC can be downloaded from the SODECA website or the QuickFan selector programme.

Dimensions mm



| | A | B1 | B2 | C | D1 | D2 | D3 | E | G1 | G2 | d |
|------------------|------|------|------|-----|------|------|------|----|-----|-----|-----|
| RECUP/EC-800-BS | 684 | 1644 | 1694 | 357 | 1664 | 704 | 832 | 25 | 320 | 182 | 200 |
| RECUP/EC-1200-BS | 1124 | 1890 | 1940 | 480 | 1910 | 1144 | 955 | 25 | 695 | 214 | 315 |
| RECUP/EC-1600-BS | 1250 | 1970 | 2020 | 480 | 1990 | 1270 | 995 | 25 | 781 | 235 | 355 |
| RECUP/EC-2100-BS | 1250 | 2198 | 2248 | 620 | 2218 | 1270 | 1109 | 25 | 736 | 257 | 400 |
| RECUP/EC-2700-BS | 1250 | 2198 | 2248 | 620 | 2218 | 1270 | 1109 | 25 | 736 | 257 | 400 |

ODA: Fresh outdoor air / SUP: Air impulsion to the premise / EHA: Exit of exhaust air / ETA: Air extraction from premises

Accessories

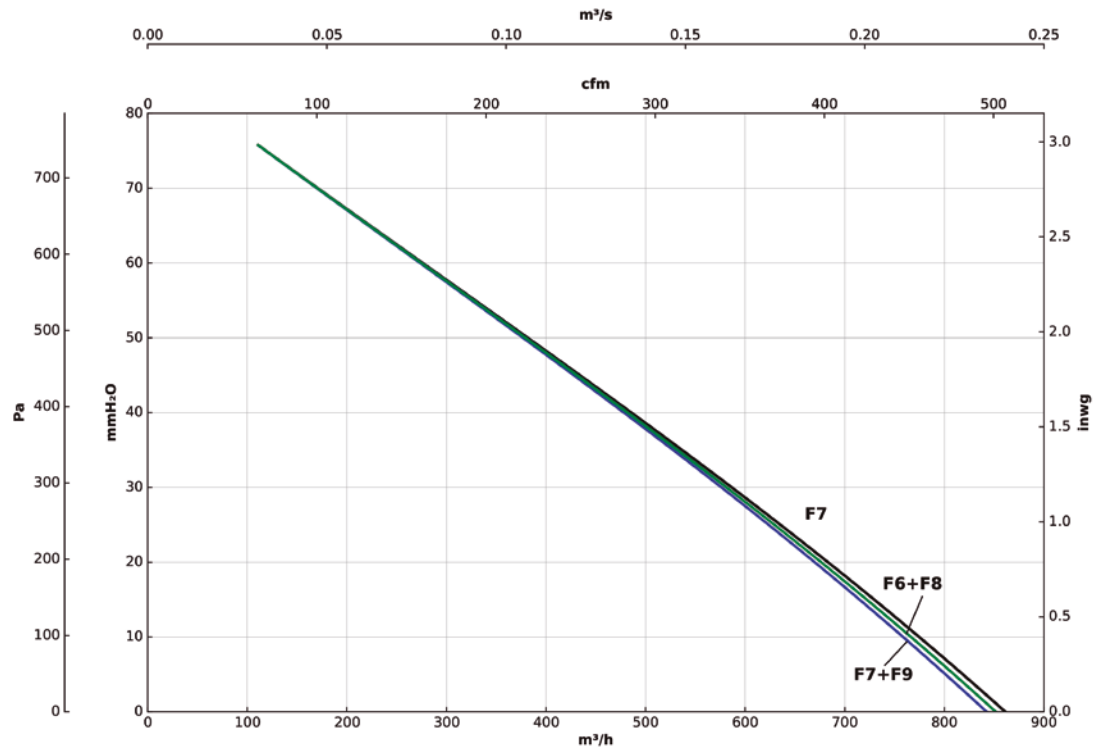


Characteristic curves

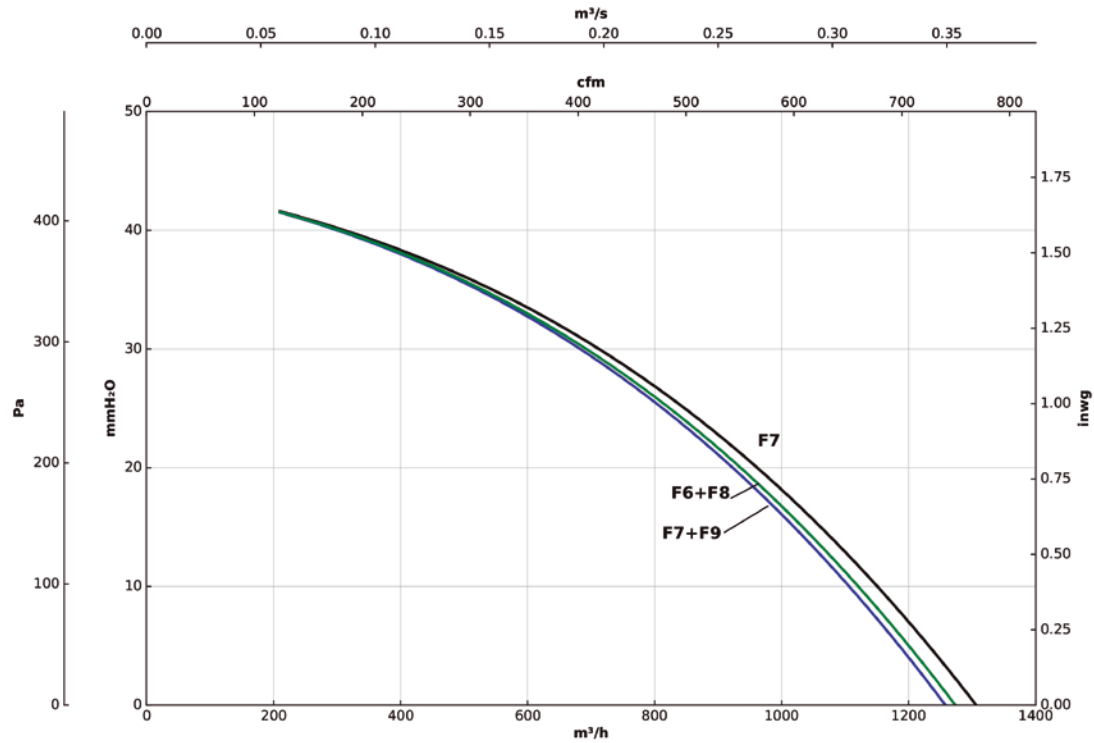
Q= Flow rate in m³/h, m³/s and cfm

Pe= Static pressure in mm H₂O, Pa and inwg

RECUP/EC-800-BS



RECUP/EC-1200-BS

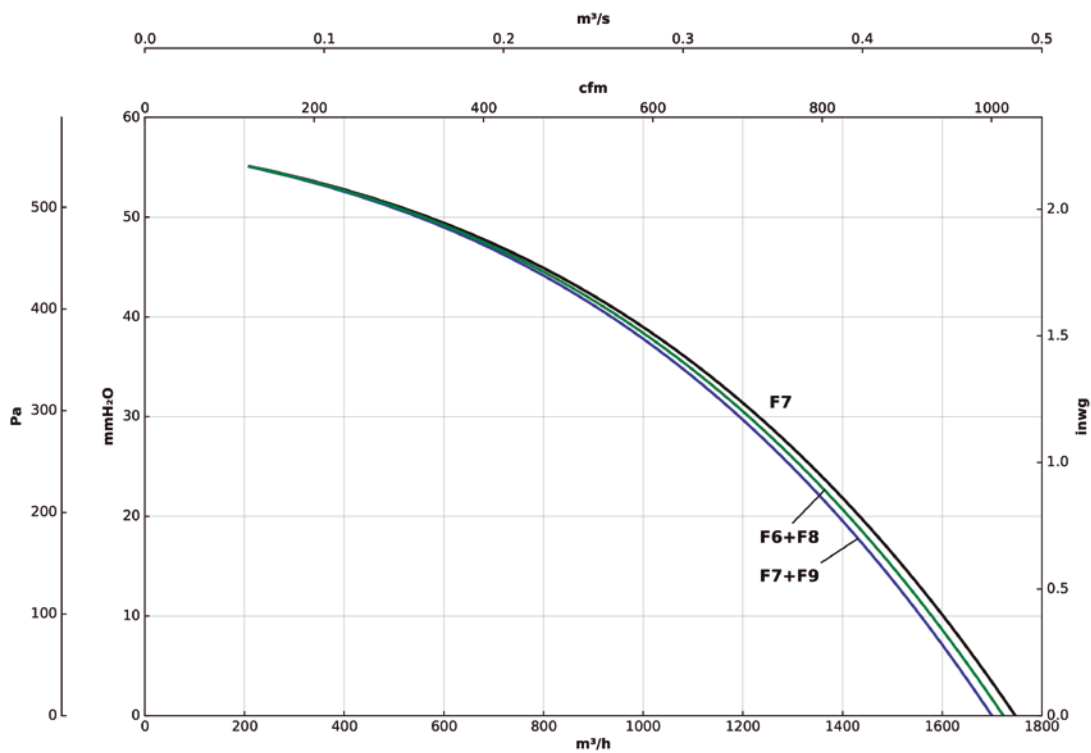


Characteristic curves

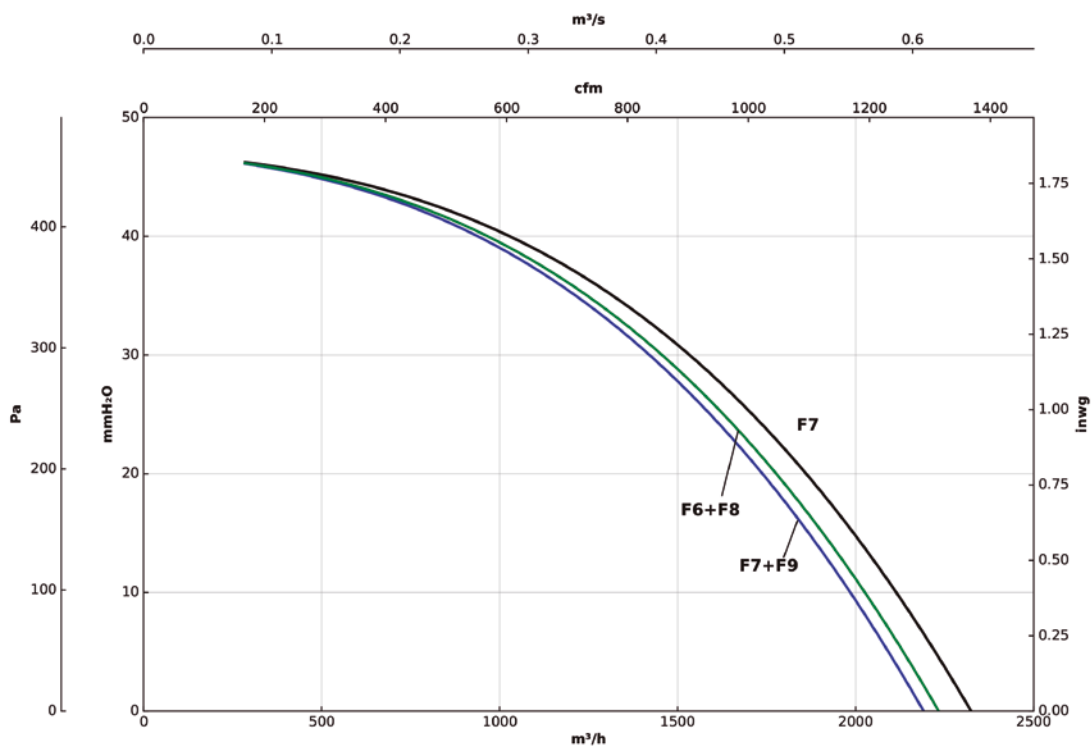
Q= Flow rate in m³/h, m³/s and cfm

Pe= Static pressure in mm H₂O, Pa and inwg

RECUP/EC-1600-BS

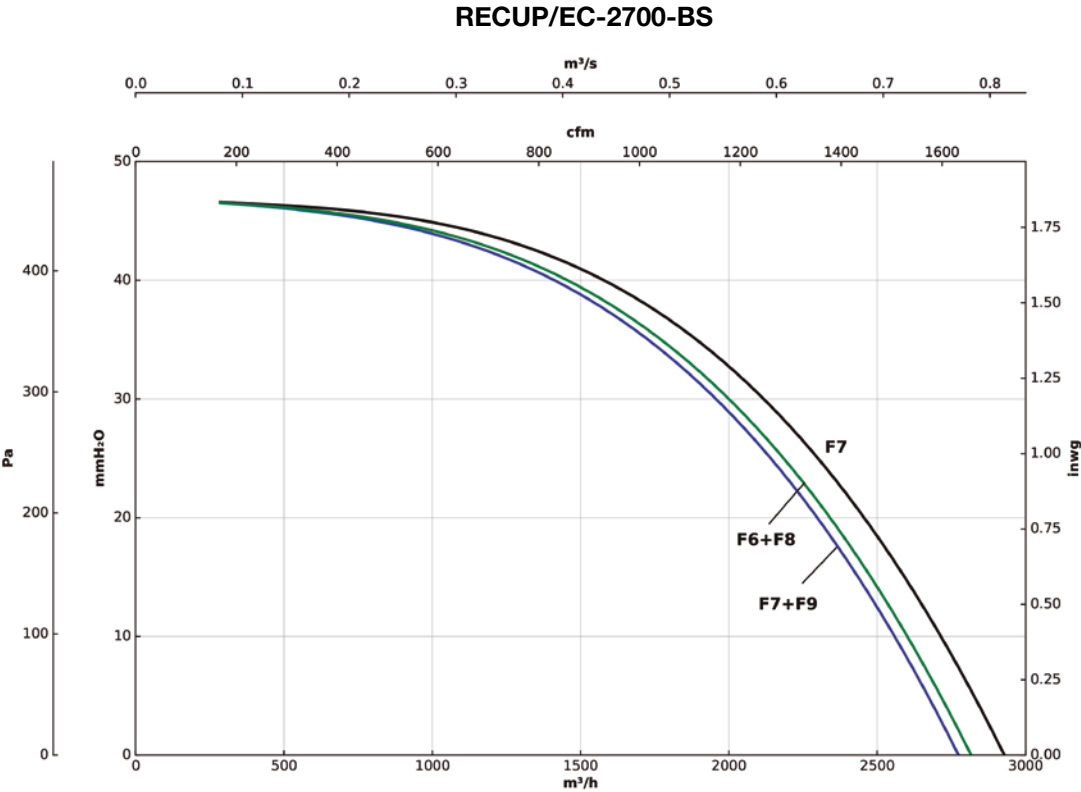


RECUP/EC-2100-BS



Characteristic curves

Q= Flow rate in m³/h, m³/s and cfm Pe= Static pressure in mm H₂O, Pa and inwg



Efficiency curves

