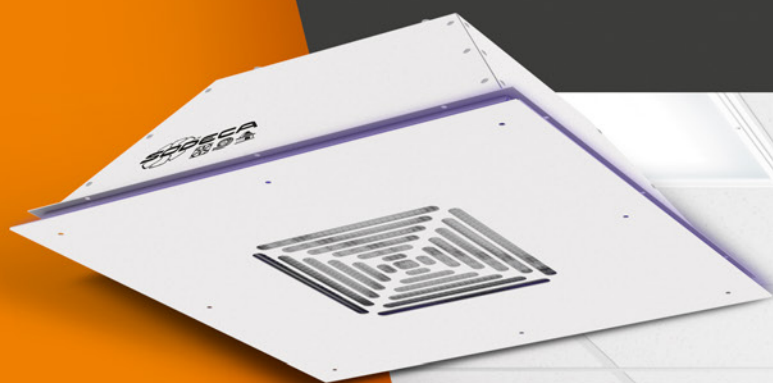




UPT

CEILING UNITS FOR PURIFYING AND DISINFECTING AIR USING HEPA H14 FILTRATION

- HEPA H14 FILTER
99.99% EFFICIENCY
- AC OR EC TECHNOLOGY
MOTORS, DEPENDING
ON MODEL
- EASY TO INSTALL
ABOVE FALSE CEILINGS
- UVc GERMICIDAL
CHAMBER DEPENDING
ON THE MODEL



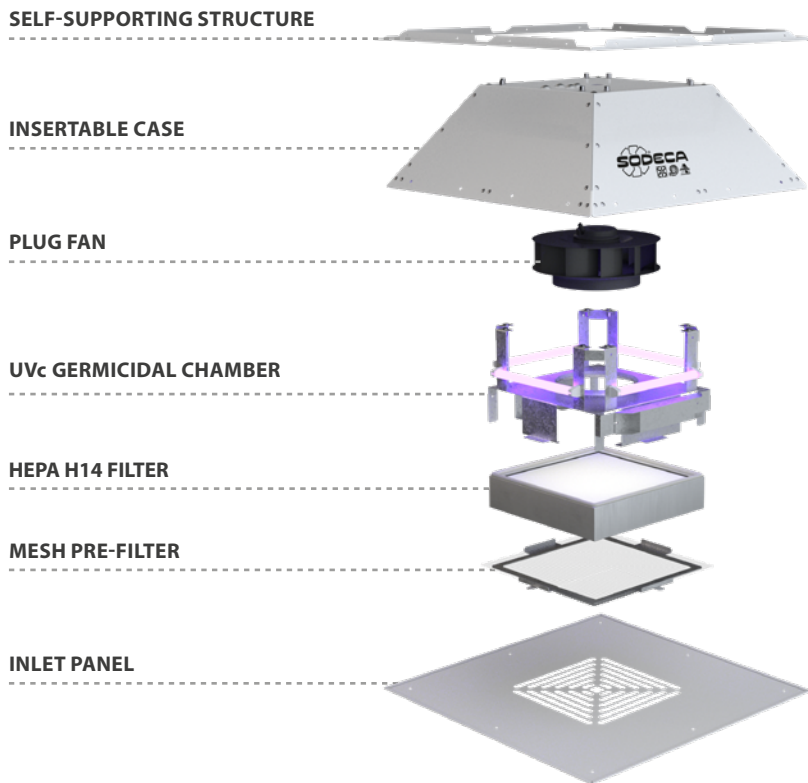
FILTRATION
STAGES



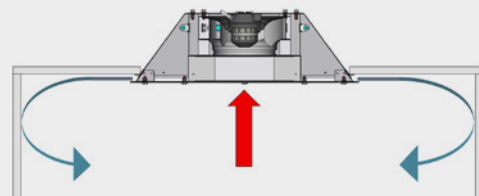


UPT

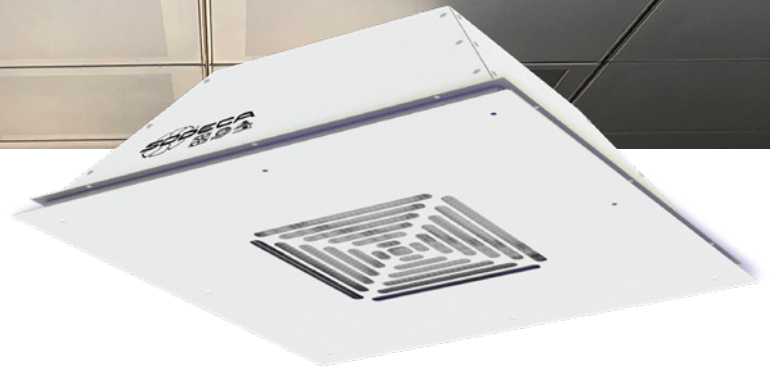
UPT series air purification and disinfection units are equipped with Plug Fans with AC or EC Technology motors, depending on model. These units have been specifically designed **to be installed above false ceilings in high occupancy areas.**



HOW DOES IT WORK?



Stale internal air enters through the **inlet** panel, which is equipped with a washable pre-filter that retains large size particles. Then, the air passes through an **absolute HEPA H14 filter**, which retains 99.99% of solid particles. After going through these two filtration stages, the air passes through the **UVc ultraviolet germicidal chamber**, destroying all viruses and bacteria as well as other pathogens. Finally the air returns to the room, fully cleaned and disinfected.



FALSE CEILINGS

Especially designed to be installed above false ceilings with removable 600 x 600 mm panels or in false ceilings made of plasterboard. Its design also allows it to be surface mounted.



MINIMISES THE VISUAL IMPACT

Installation above a false ceiling minimises the visual impact of these purification units and increases the available space in the room below.



SUITABLE FOR LARGE ROOMS

In large spaces we recommend installing several units, controlled by a single regulation system, for homogenisation of clean, bacteria free air.



EASY TO MAINTAIN

The fan and filters can be easily accessed through the inlet panel, allowing quick and easy access for cleaning and maintenance.

RECOMMENDED FOR

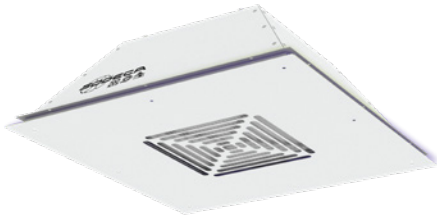
- Large office spaces
- Shopping centres
- Health centres
- Beauty salons
- Schools
- Gyms
- Lifts



UPT



Ceiling units for purifying and disinfecting air using HEPA H14 filtration



Ceiling units for purifying and disinfecting air, equipped with HEPA H14 filters and Plug Fans, with AC or EC Technology motors, depending on model, and with optional UVC germicidal chambers. These units have been especially designed to be installed above false ceilings in high occupancy areas.

Characteristics:

- Structure designed for installation above false ceilings.
- Washable pre-filter.
- HEPA type filters with a filtration efficiency of 99.99%.
- UVC germicidal chamber, depending on model.
- Plug Fan with AC or EC Technology, depending on model.
- Backward-curved impeller.
- Inspection cover for maintenance and filter replacement.
- Low noise levels.

Motor:

- EC Version: High efficiency EC Technology motors with external rotor, regulated by 0-10 V signal.
- AC Version: External rotor motors with built-in thermal protector, class F, with ball bearings, IP54 protection.

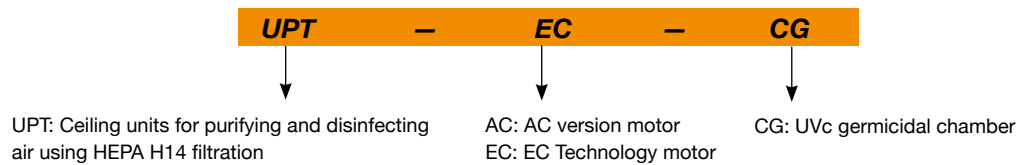
Finish:

- Anti-corrosive polyester resin finish polymerised at 190°C, previously degreased by applying a phosphate-free nanotechnological treatment.
- Standard colour RAL 9003.

On request:

- Available in any RAL colour.

Order code



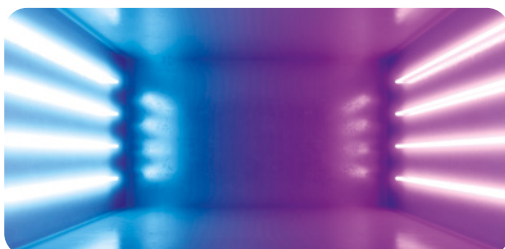
Technical characteristics

Model	Maximum flow rate (m ³ /h)	Recommended effective area ¹ (m ²)	Speed (r/min)	Maximum power (W)	Power supply	Sound pressure level at 50% of maximum flow rate ² dB(A)	Approx. weight (kg)
UPT AC	150	20	1410	60	200-240 V 50/60 Hz 1 Ph	33	10
UPT EC	350	45	2440	120	200-240 V 50/60 Hz 1 Ph	45	10
UPT AC-CG	150	20	1410	60	200-240 V 50/60 Hz 1 Ph	33	10
UPT EC-CG	350	45	2440	120	200-240 V 50/60 Hz 1 Ph	45	10

¹ Recommended area at 3 metre ceiling height. ² Irradiated sound pressure level in dB(A) at a distance of 3 m.

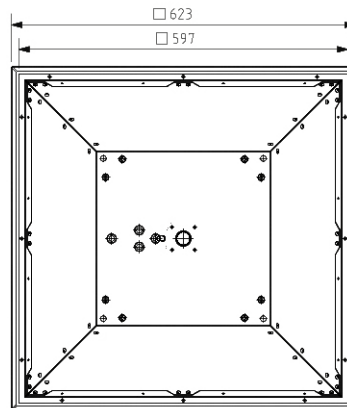
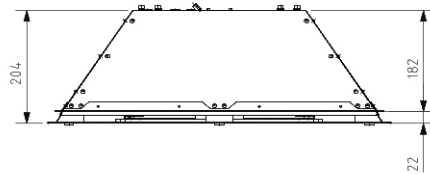
Technical characteristics of the UVC germicidal chamber

Depending on the model, these purification units may incorporate a germicidal chamber utilising UVC ultraviolet lamps in a 254 nm spectrum, which is the most effective wave amplitude for deactivating most microorganisms, whereby they absorb short wavelength energy through their DNA and RNA. Refer to the specific document for a list of the types of viruses or bacteria that are affected by the radiation dose emitted inside the germicidal chamber.



Model	Number of lamps	Electric power (W)	UVC radiation power (W)	Radiation dose (mJ/cm ²)
UPT AC-CG	4	44	11.2	12.4
UPT EC-CG	4	44	11.2	5.3

Dimensions mm



Control



WIFI RAC

Recessed WiFi controller for AC motors up to 300 W, with connections for auxiliary equipment

This controller allows fan speed adjustment and allows the germicidal chamber lamps to be turned on or off. Additionally, it is equipped with WiFi connectivity for remote operation, which also allows function and time programming via the Smart Life application.

Accessories



CAP/EC



SI-PM2,5+VOC



SI-CO2+VOC



MICA-LITE/W



HEADQUARTERS

Sodeca, S.L.U.

Pol. Ind. La Barricona
Carrer del Metall, 2
E-17500 Ripoll
Girona, SPAIN
Tel. +34 93 852 91 11
Fax +34 93 852 90 42
General sales: comercial@sodeca.com
Export sales: ventilation@sodeca.com

PRODUCTION PLANT

Sodeca, S.L.U.

Ctra. de Berga, km 0,7
E-08580 Sant Quirze de Besora
Barcelona, SPAIN
Tel. +34 93 852 91 11
Fax +34 93 852 90 42
General sales: comercial@sodeca.com
Export sales: ventilation@sodeca.com



EUROPE

FINLAND

Sodeca Finland, Oy

HUITTINEN
Sales and Warehouse
Mr. Kai Yli-Sipilä
Metsälinnankatu 26
FI-32700 Huittinen
Tel. + 358 400 320 125
orders.finland@sodeca.com

HELSINKI
Smoke Control Solutions
Mr. Antti Kontkanen
Vilppulantie 9C
FI-00700 Helsinki
Tel. +358 400 237 434
akontkanen@sodeca.com

HYVINKÄÄ
Industrial Applications
Mr. Jaakko Tomperi
Niinistökatu 12
FI-05800 Hyvinkää
Tel. +358 451 651 333
jtomperi@sodeca.com

ITALIA

Marelli Ventilazione, S.R.L.

Viale del Lavoro, 28
37036 San Martino B.A.
(VR), ITALY
Tel. +39 045 87 80 140
vendite@sodeca.com

PORTUGAL

Sodeca Portugal, Unip. Lda.

PORTO
Rua Veloso Salgado
1120/1138
4450-801 Leça de Palmeira
Tel. +351 229 991 100
geral@sodeca.pt

LISBOA
Pq. Emp. da Granja Pav. 29
2625-607 Vialonga
Tel. +351 219 748 491
geral@sodeca.pt

ALGARVE
Rua da Alegria, 33
8200-569 Ferreiras
Tel. +351 289 092 586
geral@sodeca.pt

UNITED KINGDOM

Sodeca Fans UK, Ltd.

Mr. Mark Newcombe
Tamworth Enterprise Centre
Philip Dix House, Corporation
Street, Tamworth, B79 7DN
UNITED KINGDOM
Tel. +44 (0) 1827 216 109
sales@sodeca.co.uk

AMERICA

CHILE

Sodeca Ventiladores, SpA.

Sra. Sofía Ormazábal
Santa Bernardita 12.005
(Esquina con Puerta Sur)
Bodegas 24 a 26,
San Bernardo, Santiago, CHILE
Tel. +56 22 840 5582
ventas.chile@sodeca.com

COLOMBIA

Sodeca Latam, S.A.S.

Sra. Luisa Stella Prieto
Calle7 No. 13 A-44
Manzana 4 Lote1, Montana
Mosquera, Cundinamarca
Bogotá, COLOMBIA
Tel. +57 1 756 4213
ventascolombia@sodeca.co

PERU

Sodeca Perú, S.A.C.

Sr. Jose Luis Jiménez
C/ Mariscal Jose Luis de
Orbegoso 331. Urb. El pino,
15022, San Luis. Lima, PERÚ
Tel. +51 1 326 24 24
Cel. +51 994671594
comercial@sodeca.pe

RUSSIA

RUSSIA

Sodeca, L.L.C.

Mr. Stanislav Alifanov
Severnoye Shosse, 10 room 201
Business Park Plaza Ramstars
140105 Ramenskoye,
Moscow region, RUSSIA
Tel. +7 495 955 90 50
alifanov@sodeca.com



www.sodeca.com

